



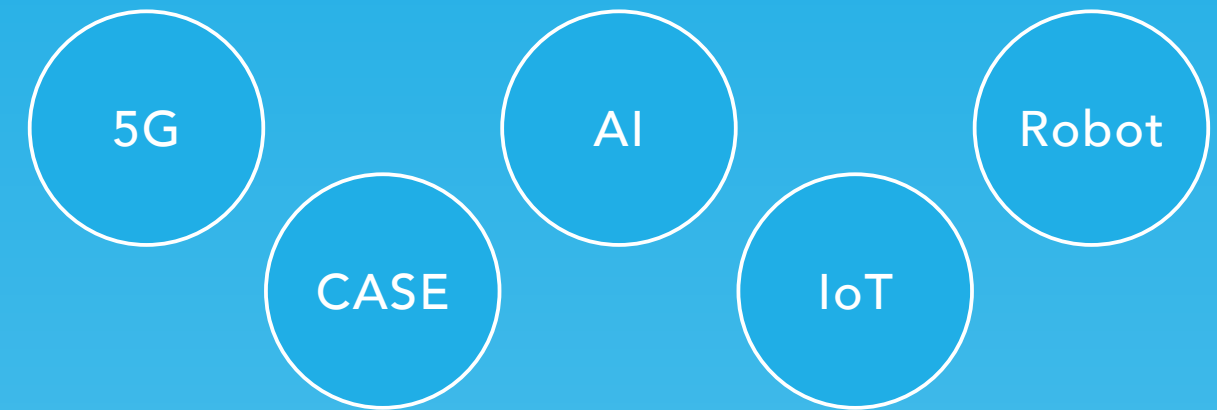
Elematec Corporation

Corporate Profile

Elematec Corporation

Sumitomo Fudosan Tokyo Mita Garden Tower 26F,
3-5-19 Mita, Minato-ku, Tokyo 108-0073 Japan
TEL: 81-3-3454-3526 FAX: 81-3-3454-3634
<https://www.elematec.com/en/>

We decide what we are



Evolving Elematec for a New Era

The electronics industry is changing at a rapid pace.

Amid constant innovation, fierce competition has expanded globally, transcending industry boundaries.

What is Elematec's vision for the future?

Elematec has developed the ability to provide one-stop solutions by supplementing basic trading company functions with on-site capabilities cultivated over many years of meeting diverse customer needs, as well as its five unique functions, including planning and development/design, and manufacturing service.

We decide what we are

By continuing to integrate various service functions, Elematec will evolve into an integrated service company that can meet even more diverse customer needs.

5G Fifth Generation Mobile Communication System. A communication system that offers high speed, high capacity, mass connectivity, and low latency (real-time access and response).
CASE Connected, Autonomous, Shared and Electric. The four themes that constitute the future of automobiles.
AI Artificial Intelligence. Technology that enables computers to perform intellectual tasks such as language comprehension, reasoning and problem solving in place of humans.
IoT The Internet of Things. A system for connecting and enabling the control of all types of things, including devices, machines and appliances with communication functions.
Robot A machine that performs tasks automatically, in place of humans.

Message from the CEO and Chairman of the Board



As a partner in manufacturing aligned with our customers, we will continue to provide advanced one-stop solutions.

I am Koichi Okoshi. I was appointed Chief Executive Officer and Chairman of the Board of Elematec Corporation, as of April 1, 2025.

The state of world affairs remains uncertain, with divisions between countries, rising geopolitical risks, and supply chain disruptions due to trade friction, among other issues. The electronics industry—the environment in which the Elematec Group operates—is undergoing a rapid and dramatic transformation of technology owing to the emergence of new technologies such as AI.

Amid this environment of increasingly complex business conditions, the Group will continue to provide advanced one-stop solutions as a partner in manufacturing that is aligned with its customers. We are involved from the starting line of product development and support them through the design, prototyping, and mass production stages as well as in further strengthening quality. Through our industry-leading network in Japan and overseas, we deliver products from electronic materials, parts, and module products to finished products, stably and on a global scale.

Additionally, we aim to achieve sustainable growth and provide added value services to our customers, suppliers, and partner companies around the world by further intensifying our strengths, such as on-site capabilities that we have cultivated since our founding, and accelerating collaboration with Toyota Tsusho Corporation, which became our wholly-owning parent company in January 2025, alongside its group companies.

Chief Executive Officer and Chairman of the Board
Koichi Okoshi

Management Principles

 Mission	To provide new value by expanding our strong relationships
 Management policies	<ul style="list-style-type: none">• To provide a multitude of quality products and services globally• To constantly strive for self-improvement and to seek sustained growth for the betterment of social credibility• Strive to maximize corporate value while emphasizing corporate governance, with consideration for the environment and safety• Contribute to creating a sustainable society under the Basic Policy on Sustainability
 Principles	<ul style="list-style-type: none">• Respect customers' needs and be trusted as a manufacturing partner• Actively exchange views and take on challenges with enthusiasm, speed and teamwork• Each employee shall strive for self-improvement with an emphasis on equal opportunity and fair evaluation• Pursue the happiness and well-being of employees and growth as a group

Corporate Overview

(As of March 31, 2024/Consolidated)

Trade name.....	Elematec Corporation	Net sales.....	194,457 million yen
Founded.....	April 1947	Ordinary income.....	7,595 million yen
Head office location.....	3-5-19, Mita, Minato-ku, Tokyo	ROE.....	7.9%
Capital.....	2,142 million yen	Total assets.....	115,727 million yen
Headcount.....	1,225	Net assets.....	69,529 million yen
Suppliers.....	Approx. 7,000 companies	Shareholders' equity ratio.....	60.1%
Users.....	Approx. 6,000 companies	Overseas sales ratio.....	51.1%




The company name "Elematec" is derived from the words electronics, materials, and technology.


History of Elematec

A History of Responding to Changing Customer Needs and Markets
Elematec has grown steadily by supplying parts for the mobile phone, game console, LCD television, smartphone and other growing industries and markets of the time in the rapidly changing electronics industry.
We will continue evolving to stay one step ahead of market trends as a manufacturing partner that supports the future of electronics.


ODM..... The original design and manufacture of other companies' products. We outsource manufacturing.




Environmentally friendly commercial materials



Robot



Home electronics(ODM)




Dashboard camera(ODM)




Automotive




Organic EL, large LCD television



Amusement




Smartphone




Game console



LCD television



Mobile phone



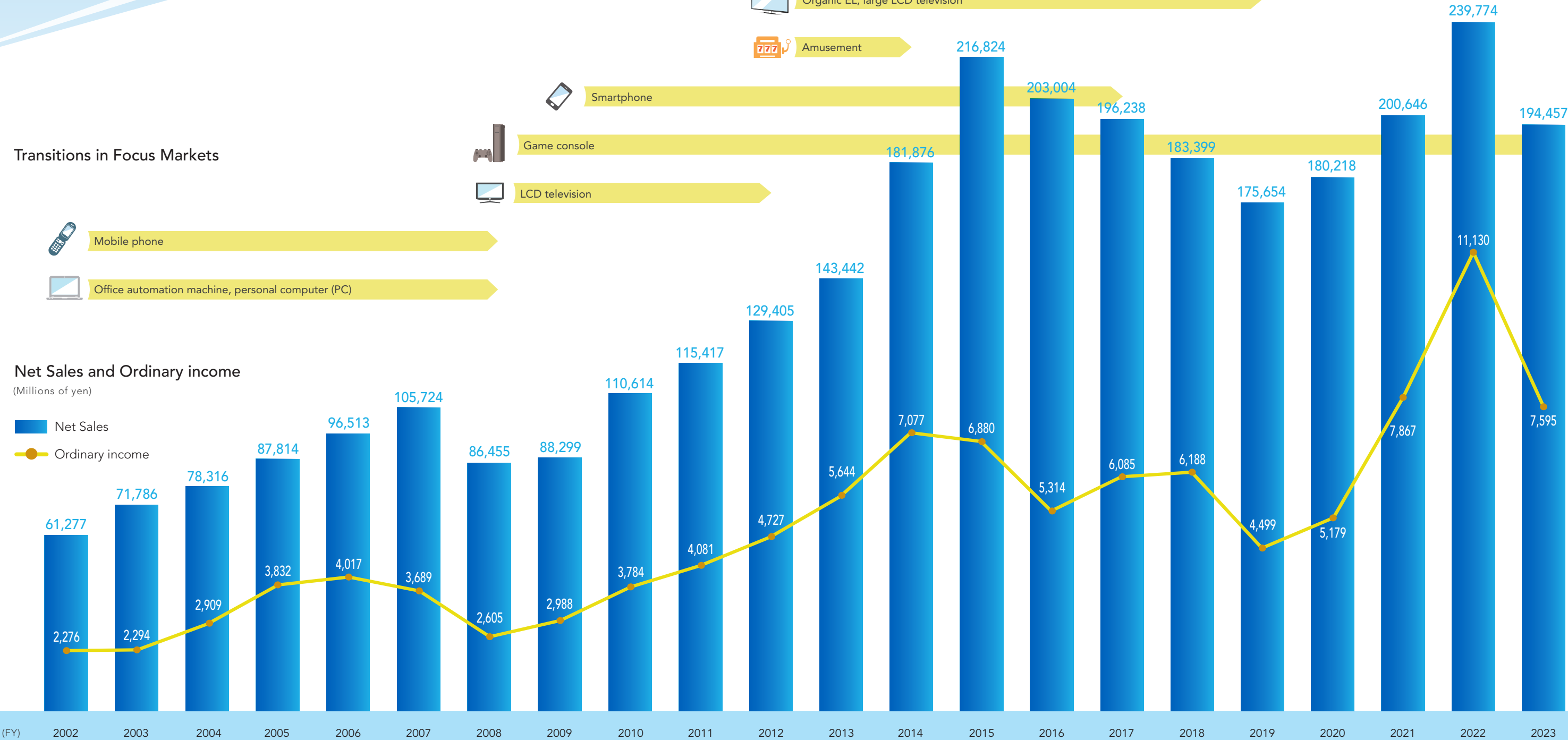
Office automation machine, personal computer (PC)

Transitions in Focus Markets

Net Sales and Ordinary income

(Millions of yen)

Net Sales
Ordinary income



Timeline

TAKACHIHO ELECTRIC CO., LTD.

1947

Established as an electrical insulation materials trading company in Minato-ku, Tokyo

2005

Listed on the first section of the Tokyo Stock Exchange

2009

Elematec Corporation established through the merger of TAKACHIHO ELECTRIC and OHNISHI DENKI
Changed trade name to Elematec Corporation

2011

Concluded capital and business alliance agreement with TOYOTA TSUSHO CORPORATION

2014

Absorption-type merger of TOMUKI CORPORATION

2022

Transited to the Prime Market of the Tokyo Stock Exchange New Market Segments

OHNISHI DENKI CO., LTD.

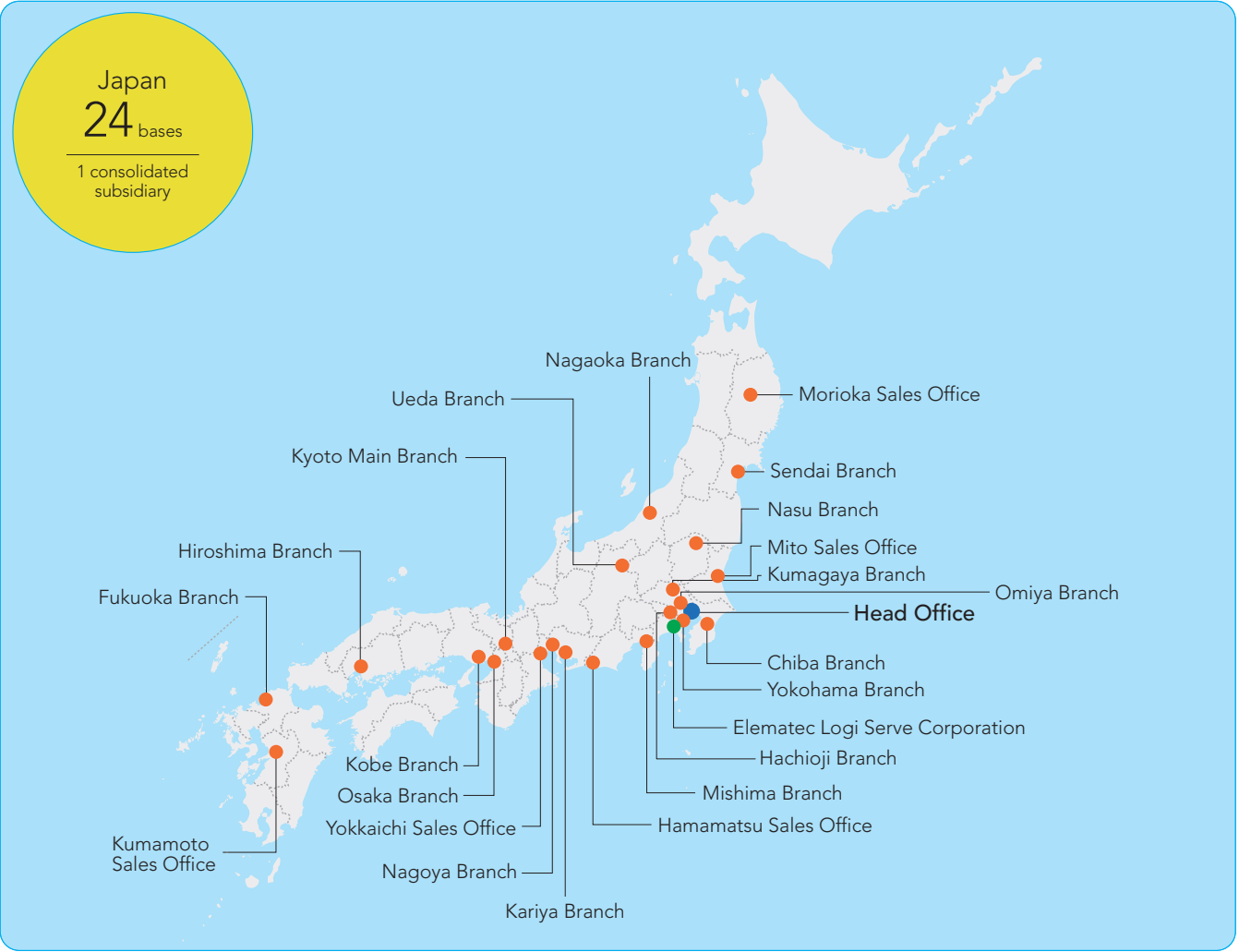
1958

Established as an electrical insulation materials trading company in Kyoto

(Note) The Group has applied the Accounting Standard for Revenue Recognition (ASBJ Statement No. 29, March 31, 2020) since the beginning of the fiscal year 2022.

Network of Elematec's Bases

By establishing relationships built on solid trust, Elematec plays a leading role in globally connecting suppliers with users who are seeking their technologies and products. With a network of 72 bases worldwide, including 22 consolidated subsidiaries, we are always at our customers' side, ready to respond promptly to their diverse needs. We will continue to expand the potential of electronics by further broadening our connections.

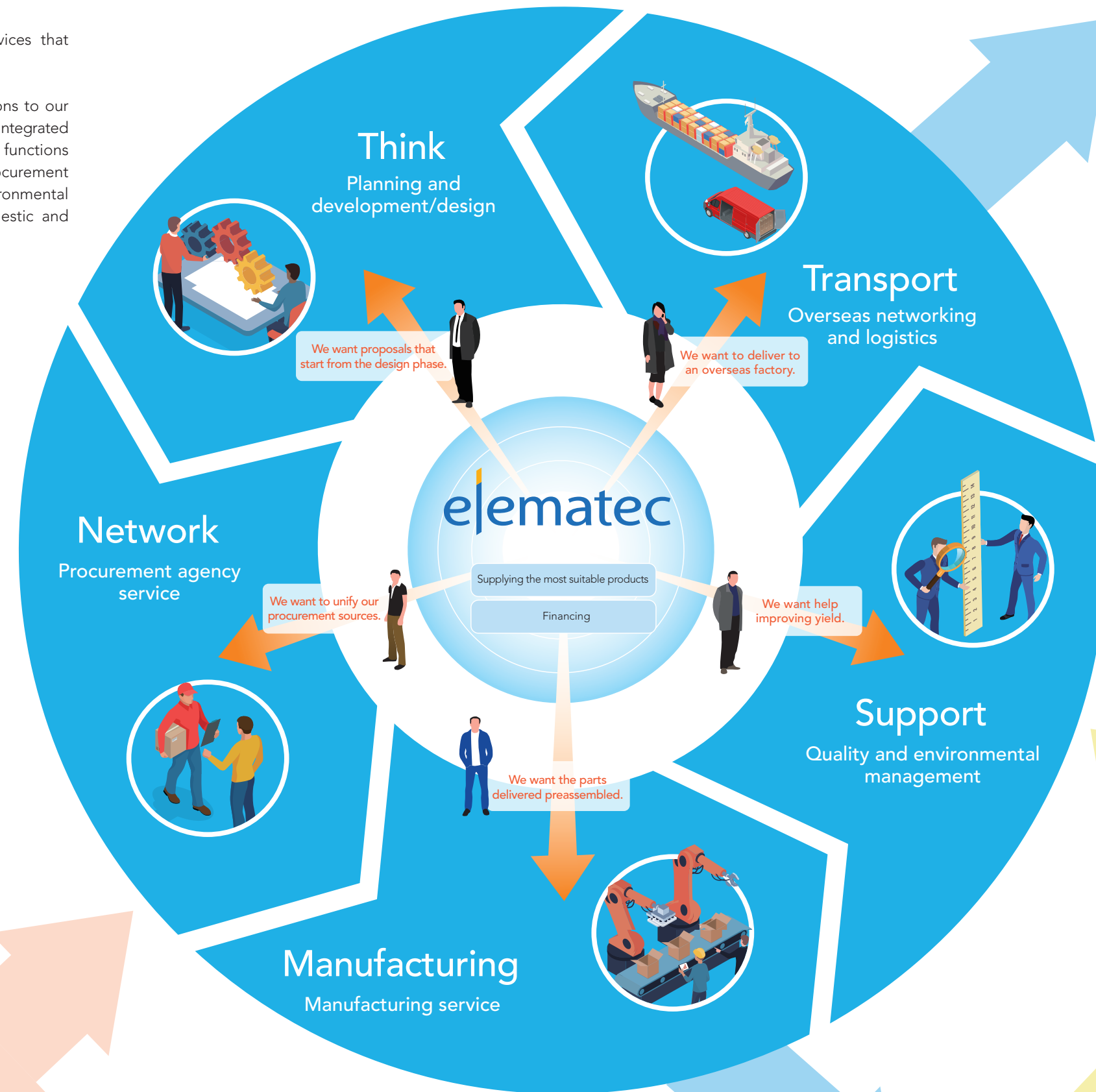


Why Do Customers Choose Elematec?

Elematec provides the products, information and services that customers need.

This is why customers choose Elematec.

To meet customer needs, we have added new functions to our basic trading company functions. We have evolved into an integrated service company supplying one-stop solutions through functions ranging from planning and development/design to procurement agency service, manufacturing service, quality and environmental management, and logistics using our network of domestic and overseas bases.

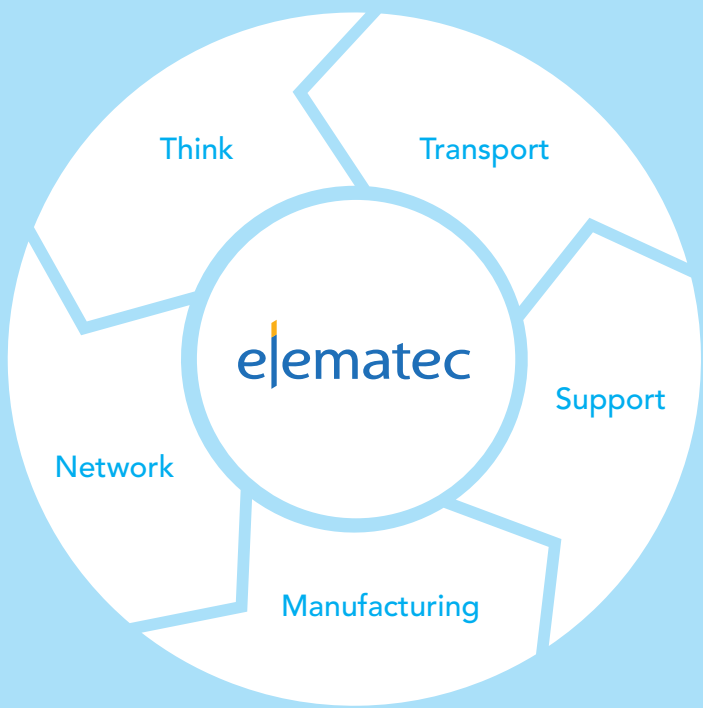


Users

Suppliers

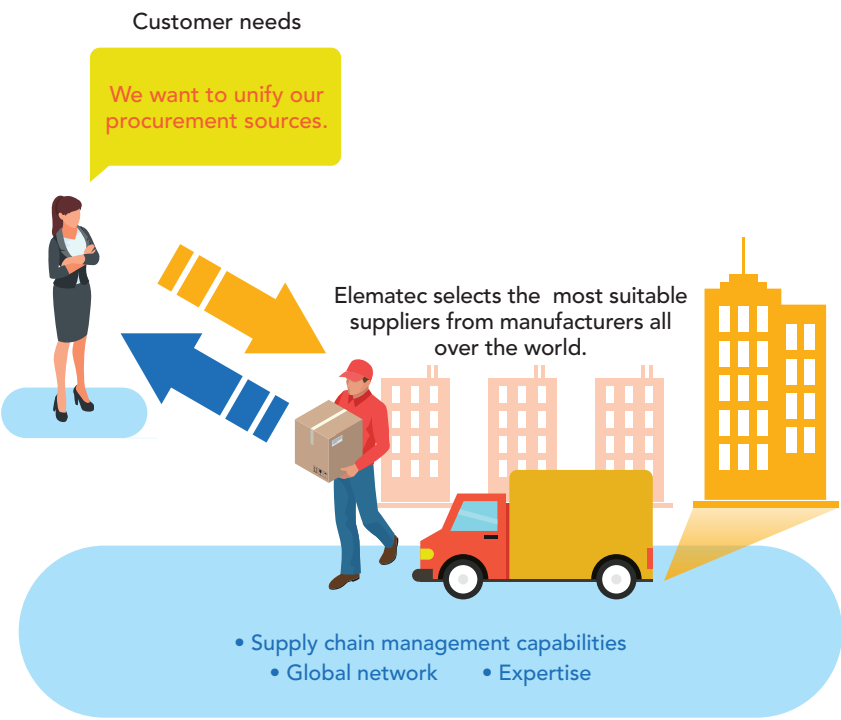
Processing service bases/
Subcontractors

Elematec's "Five Functions"



Network Procurement agency service

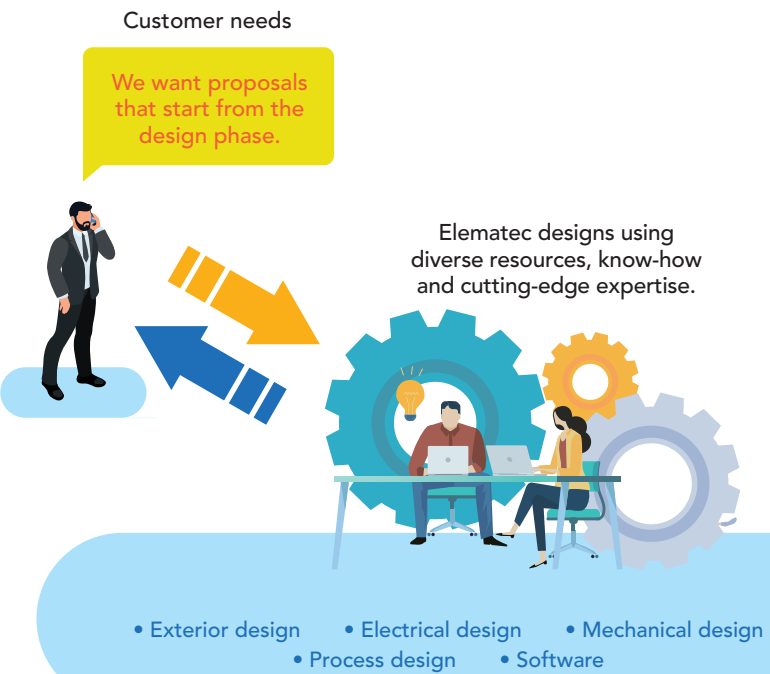
Procuring parts and materials that best match their requirements in terms of quality, cost, and delivery



Elematec provides procurement agency service to manage multiple suppliers, complex orders and deliveries on the behalf of customers, enhancing operational efficiency and reducing costs. We utilize our know-how and expertise to procure parts and materials in Japan and overseas while carrying out thorough quality control and delivery management. In addition to handling specified parts, we also suggest more suitable suppliers based on a firm grasp of the strengths of many manufacturers around the world. Elematec has bases worldwide that can respond quickly to quality issues or other problems.

Think Planning and development/design

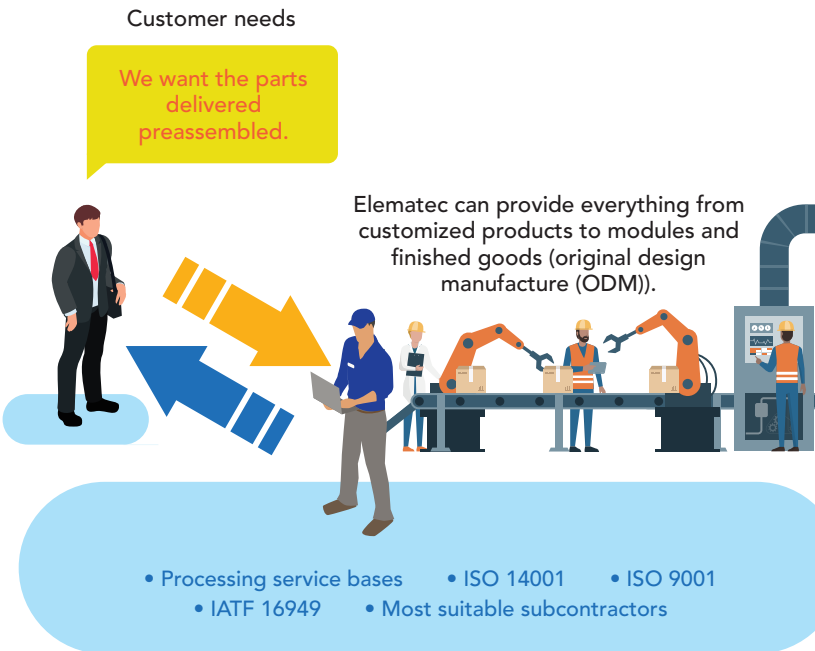
Planning and development/design of products that match essential needs



Elematec forms relationships that extend beyond customers' purchasing divisions to include their design and development divisions, allowing us to identify their essential needs. From limited information, we can grasp these needs. Our Sales Division, Marketing and Development Division and Design Department work together to plan, develop and design new parts and units. Our Design Department has specialists in mechanical design and electrical circuit design, and possesses prototyping equipment such as 3D CAD, 3D printers and numerically controlled (NC) machine tools. In addition to using these resources, we leverage our vast operational infrastructure, cutting-edge expertise and know-how to provide products that match our customers' needs.

Manufacturing Manufacturing service

Providing high-quality manufacturing service and customization

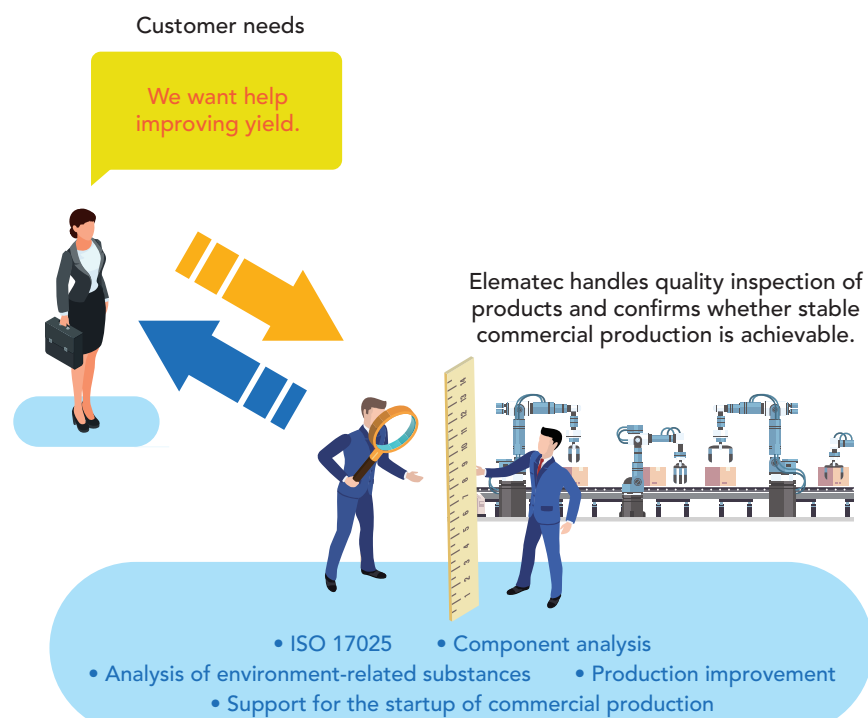


Elematec has one domestic and two overseas processing service bases for manufacturing customized products and modules. These items have been developed and designed for specific customers, based on the customer's product development information and on the latest technological information gathered through our worldwide network of bases. In addition to using our own processing service bases, we work in cooperation with technologically advanced, cost-competitive contract manufacturers in Japan and overseas to supply customized products and modules, as well as finished goods (ODM). We have constructed a global supply chain based on our understanding of "information," "technology," and "manufacturing."

ODM.....The original design and manufacture of other companies' products. We outsource manufacturing.
ISO 14001An international standard that serves as a framework for ongoing reduction of environmental impact in business activities (environmental management system)
ISO 9001An international standard that serves as a framework for continuous improvement in the quality of products and services, and increasing customer satisfaction (quality management system)
IATF16949.....An international standard that serves as a framework for preventing defects in automotive products and services, and for reducing product nonuniformity and waste (quality management system for the automotive industry)

Support Quality and environmental management

Sophisticated quality control system for providing high-quality products

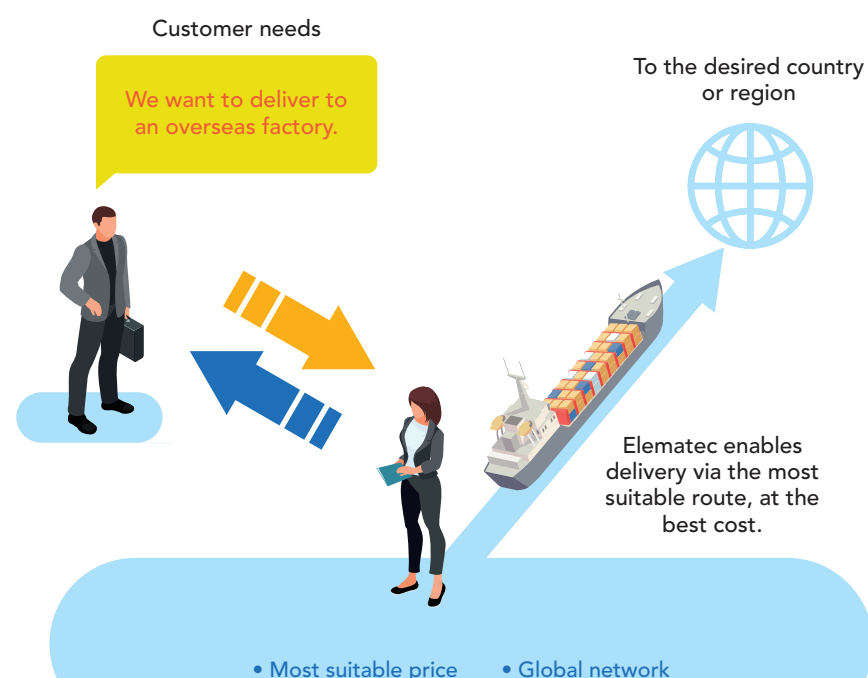


ISO 17025 An international standard that certifies the technical capabilities of testing laboratories and calibration agencies

Elematec offers a variety of services to meet customers' stringent quality demands. In response to customers' audit requests, in addition to conducting tests to ascertain that products and environmental protection measures, such as component analysis, meet standards, we confirm whether stable commercial production is achievable when shifting from trial production. Led by our Environment Preservation & Quality Assurance Department, we provide multifaceted support when defects occur, including promptly identifying and analyzing defects with the customer, formulating and implementing improvement plans, and working to prevent recurrence.

Transport Overseas networking and logistics

Providing smooth global logistical support using our worldwide network of bases



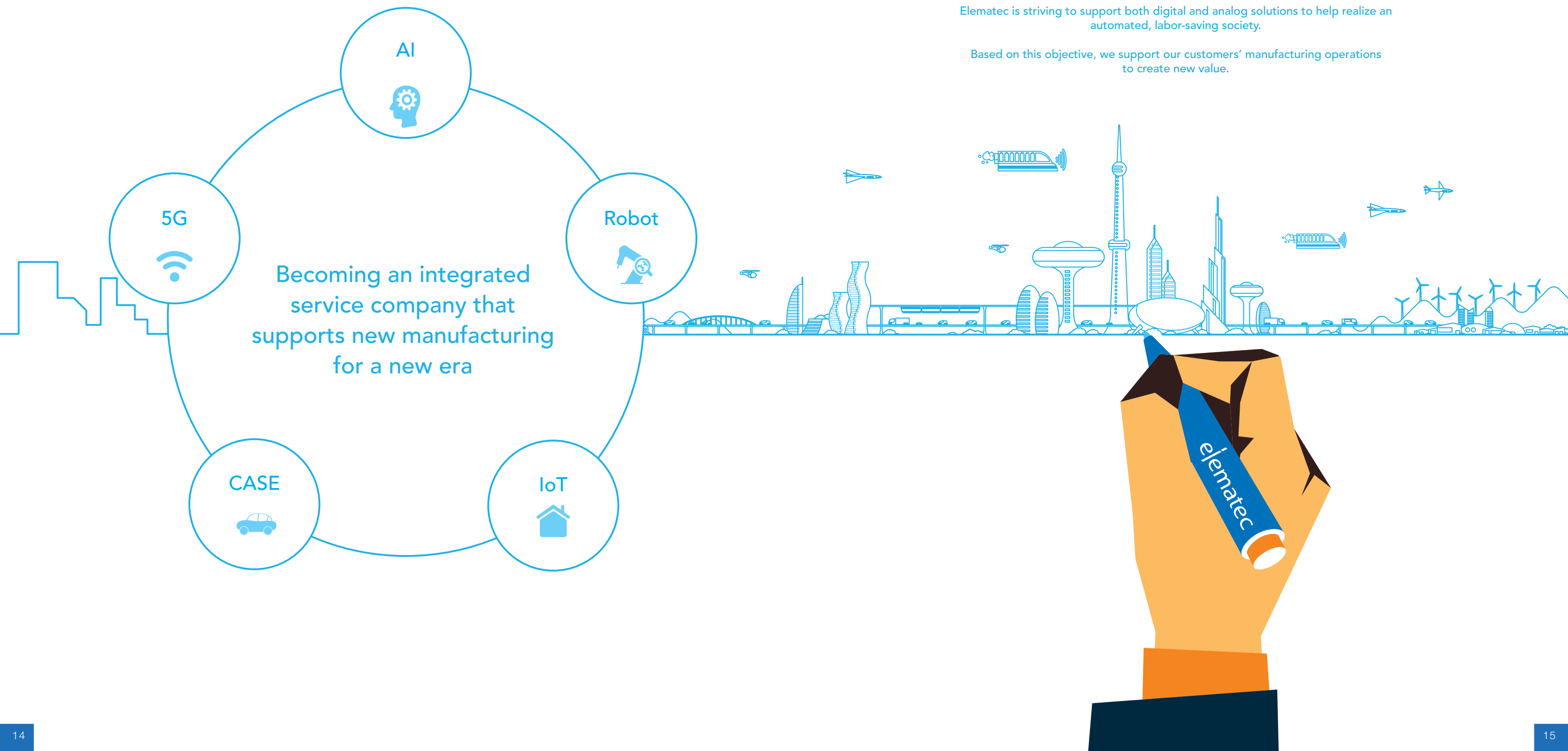
With the advance of globalization, there has been an expansion in offshore trade that does not pass through Japan. Furthermore, a current trend in global business is the shift from China as the "factory of the world" to manufacturing centered on the ASEAN region. Elematec's worldwide network is able to respond to this trend. We ensure close cooperation not only between Japan and overseas bases, but also between overseas bases. Whether in Japan or elsewhere, we work closely with our customers to realize faster and smoother communications and logistics, transcending time zones and language barriers.

Elematec's Focus Market Areas

Elematec's services and the products it handles are utilized in every area. We have identified 22 focus market areas, and are expanding our business activities using our five unique functions.



We create new value



By continuing to quickly identify and respond to changes around the world, Elematec will take advantage of large social trends to achieve further growth.

5G is certain to spread. It will give rise to completely new products and services that take advantage of its high speed, high capacity, mass connectivity and low latency (real-time access and response).

We are moving toward a future in which everything is electronic, automated and labor-saving. This dramatic change will lead to a rapid increase in demand for electronic materials and components, resulting in further expansion of the fields in which Elematec will grow.

Elematec is striving to support both digital and analog solutions to help realize an automated, labor-saving society.

Based on this objective, we support our customers' manufacturing operations to create new value.

Officers (As of April 1,2025)

Members of the Board

Member of the Board	Akira Yokode
Chief Executive Officer and Chairman of the Board	Koichi Okoshi
Executive Managing Director, Corporate & Administration	Sei Kawafuji
Executive Managing Director, Sales	Hiroyuki Rikuna
Member of the Board	Naohito Tsuji
Member of the Board	Yosuke Komatsu
External Member of the Board	Tatsumi Maeda
External Member of the Board	Yoshiaki Yatsu
External Member of the Board	Mie Fujimoto

Audit & Supervisory Board Members

Audit & Supervisory Board Member (Full-Time)	Yoshihito Noguchi
External Audit & Supervisory Board Member	Hiroshi Mizukami
Audit & Supervisory Board Member	Hiroshi Ito
External Audit & Supervisory Board Member	Toshio Ohshima

Managing Director

Senior Managing Director	Tsutomu Kishishita
Managing Director	Masahiro Fukami
Managing Director	Koichi Ishibashi
Managing Director	Takefumi Mizukoshi
Managing Director	Hitoshi Arai
Managing Director	Takanori Obata

Website Guide

Corporate Website
<https://www.elematec.com/en/>

